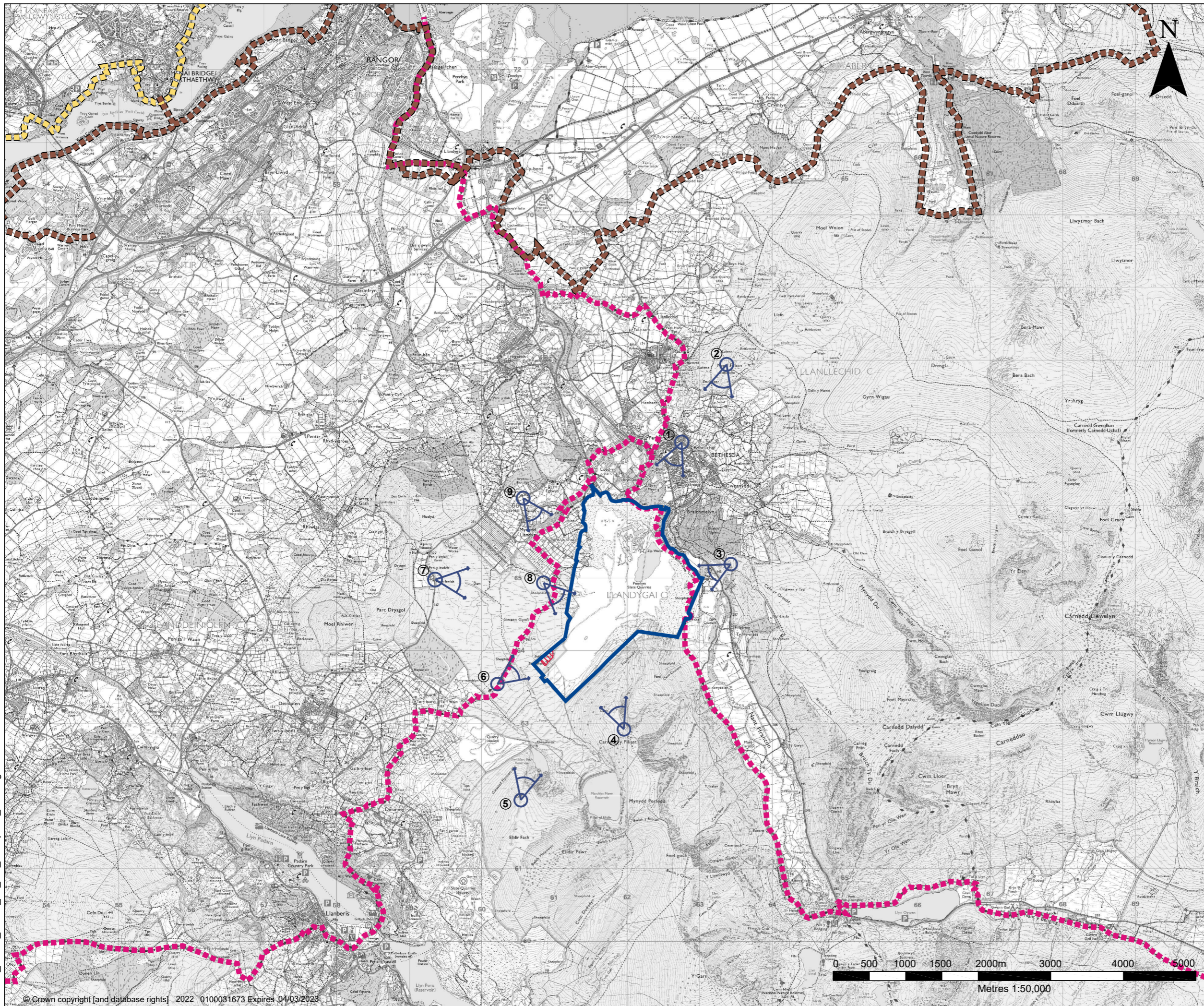








190930_06559_00021_29_6-4_Receptors_HD.dwg



LEGEND

-  PROPOSED EXTENSION AREA
-  PLANNING BOUNDARY C16/1164/16/MW
-  PROPOSED VIEWPOINTS
-  THE NORTH WALES PATH
-  ANGLESEY COASTAL PATH
-  SNOWDONIA SLATE TRAIL



Part of the Breedon Group



global environmental solutions

2ND FLOOR
HERMES HOUSE
HOLSWORTH PARK
OXON BUSINESS PARK
SHREWSBURY, SY3 5HJ
T: 01743 239250
www.slrconsulting.com

**PENRHYN QUARRY
NORTH-WEST EXTENSION ES
LANDSCAPE AND VISUAL IMPACT
ASSESSMENT
VISUAL RECEPTORS**

PQ - 6 / 4

Scale: 1:50,000 @ A3 Date: MARCH 2022