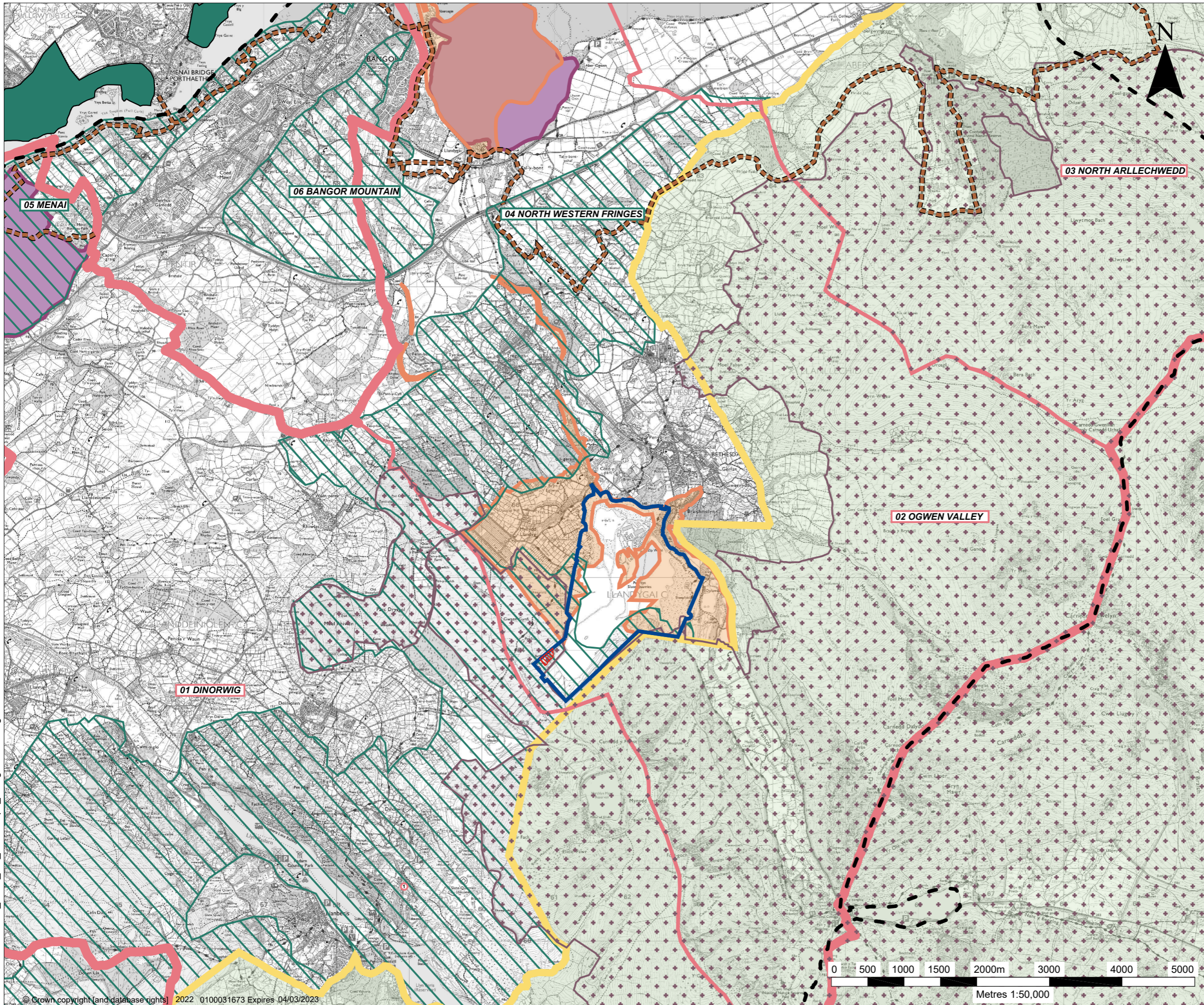


403.02491.00041.PQ_NWE_6-1_Landscape_Designations.dwg



LEGEND

- PROPOSED EXTENSION AREA
- PLANNING BOUNDARY C16/1164/16/MW

NATIONAL LANDSCAPE DESIGNATIONS

- SNOWDONIA NATIONAL PARK
- SOUTH WEST ANGLESEY AREA OF OUTSTANDING NATURAL BEAUTY (AONB)

LANDSCAPE RELATED DESIGNATIONS:

- DYFFRYN OGWEN LANDSCAPE OF OUTSTANDING HISTORIC VALUE
- 01 - DINORWIG
- 02 - OGWEN VALLEY
- 03 - NORTH ARLLECHWEDD
- GWYNEDD & ANGLESEY SPECIAL LANDSCAPE AREA REVIEW (2012)
- 04 - NORTH WESTERN FRINGES
- 05 - MENAI
- 06 - BANGOR MOUNTAIN

CULTURAL / HISTORIC DESIGNATIONS:

- CANDIDATE WORLD HERITAGE SITE (cWHS)
- SNOWDONIA SPECIAL AREA OF CONSERVATION (SAC)
- HISTORIC PARKS AND GARDENS



SLR
global environmental solutions

2ND FLOOR
HERMES HOUSE
HOLSWORTH PARK
OXON BUSINESS PARK
SHREWSBURY, SY3 5HJ
T: 01743 239250
www.slrconsulting.com

**PENRHYN QUARRY
NORTH-WEST EXTENSION ES
LANDSCAPE AND VISUAL IMPACT
ASSESSMENT
LANDSCAPE DESIGNATIONS**

PQ - 6 / 1

Scale 1:50,000 @ A3 Date MARCH 2022