

Figure 8.1 Scheduled Monuments overlying ZTV © Crown copyright. All rights reserved. Licence number 100043831



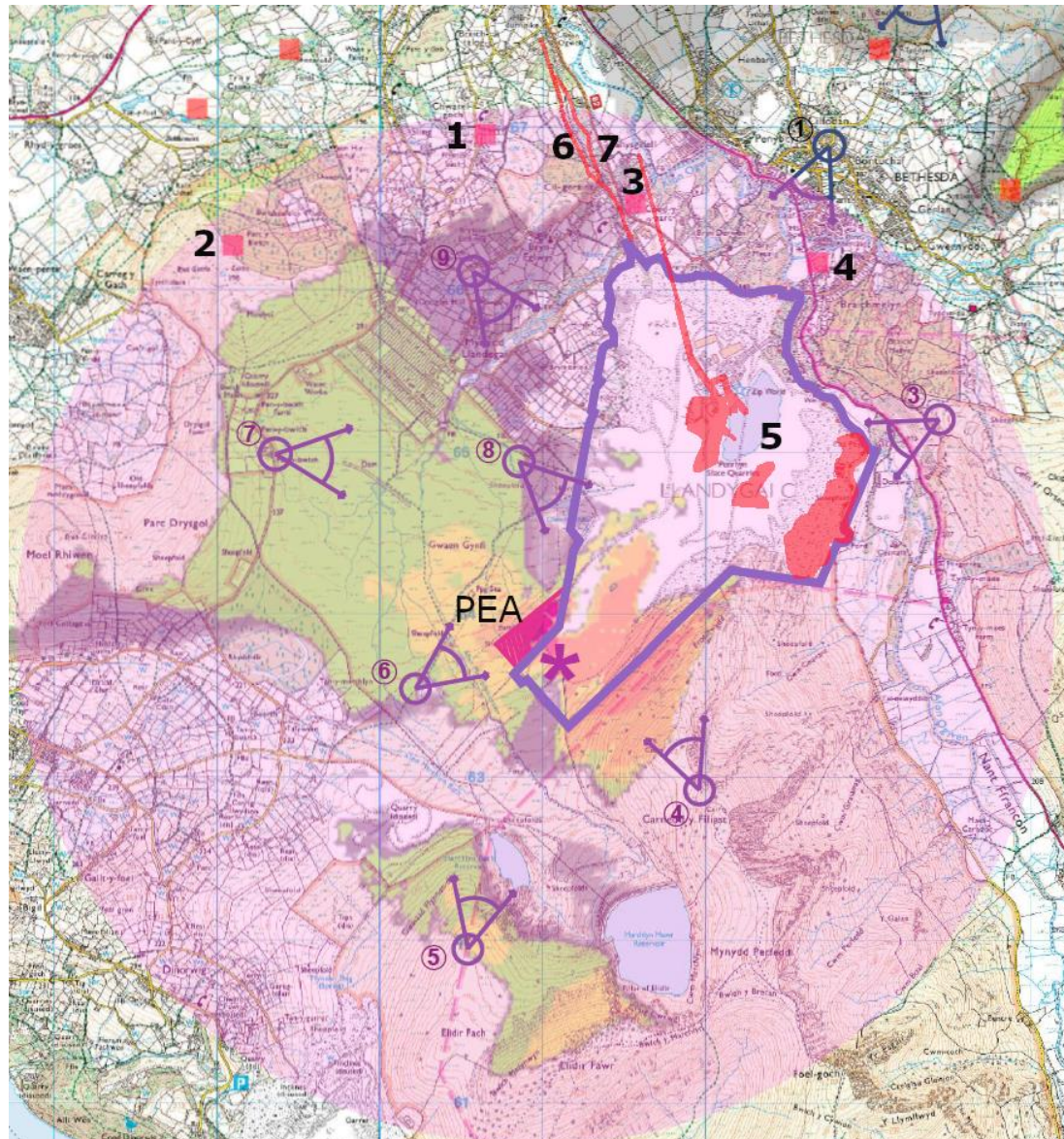


Figure 8.2 Scheduled Monuments Within 3km of the PEA © Crown copyright. All rights reserved. Licence number 100043831



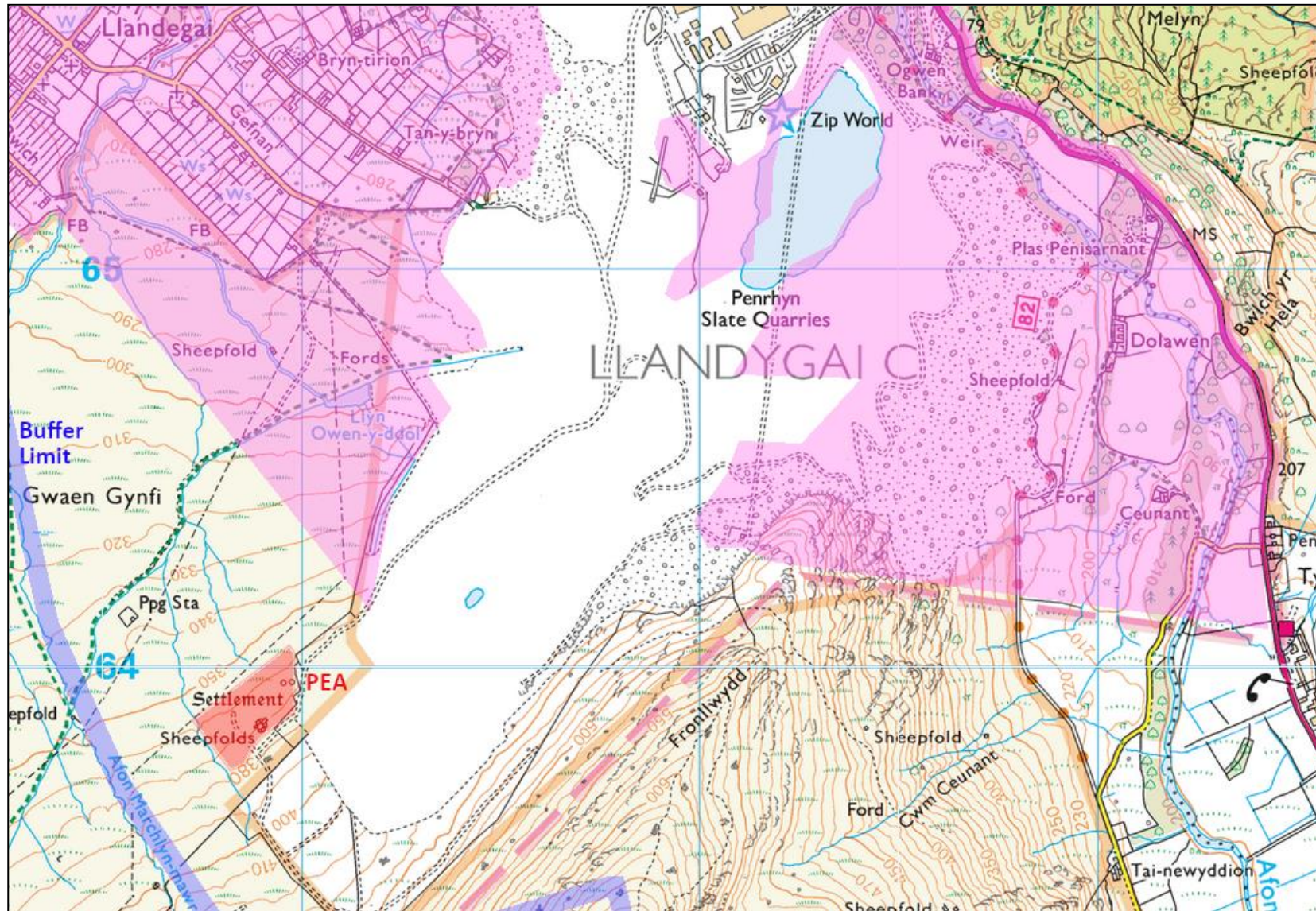


Figure 8.3 World Heritage Site (shaded purple). All other land NE of blue line within buffer.



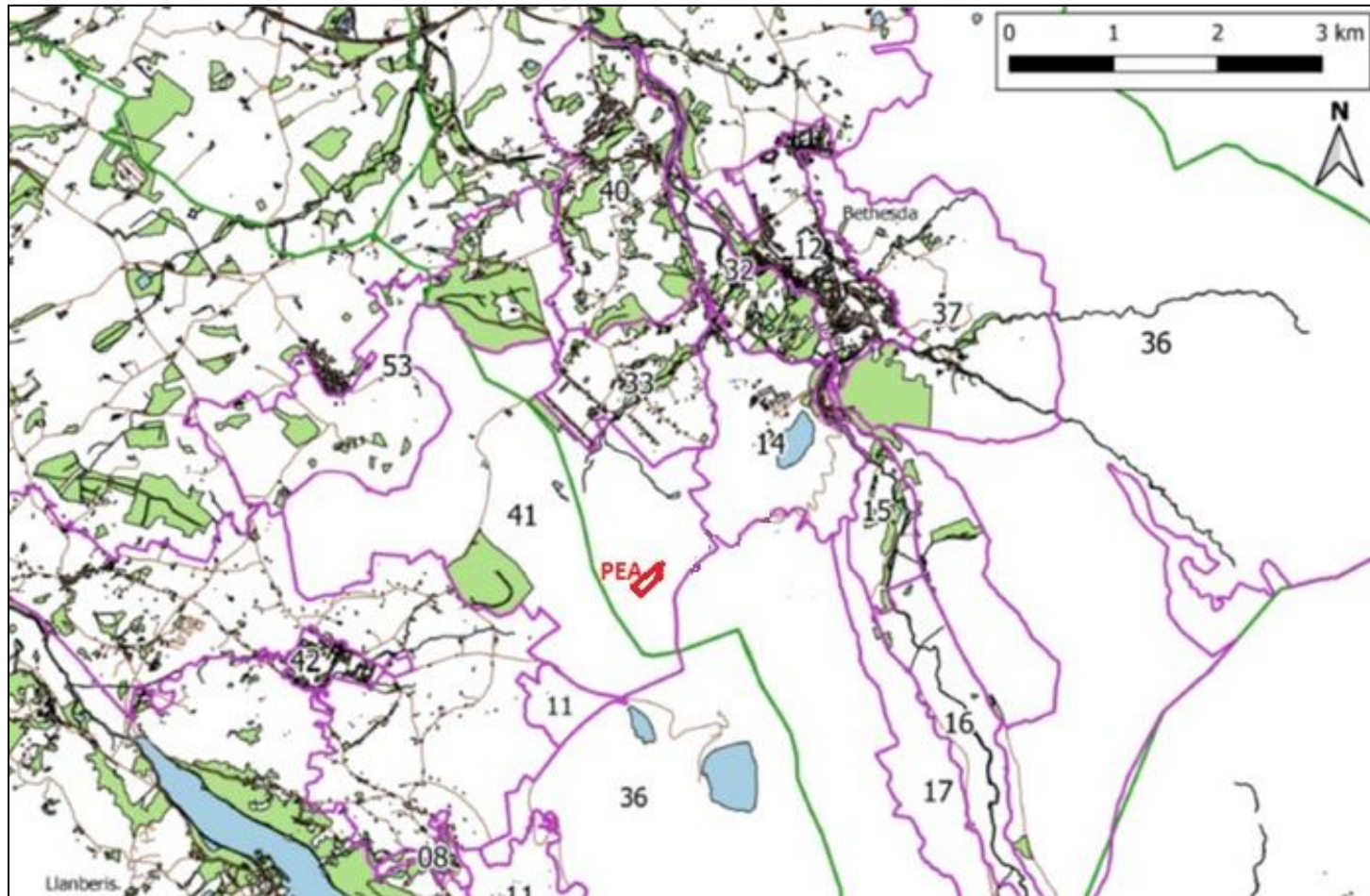


Figure 8.4 Historic Landscape Character Areas (edged purple) within 3km of the PEA. The boundary between the Ogwen Valley and Dinorwig Registered Historic Landscape is shown by a green line



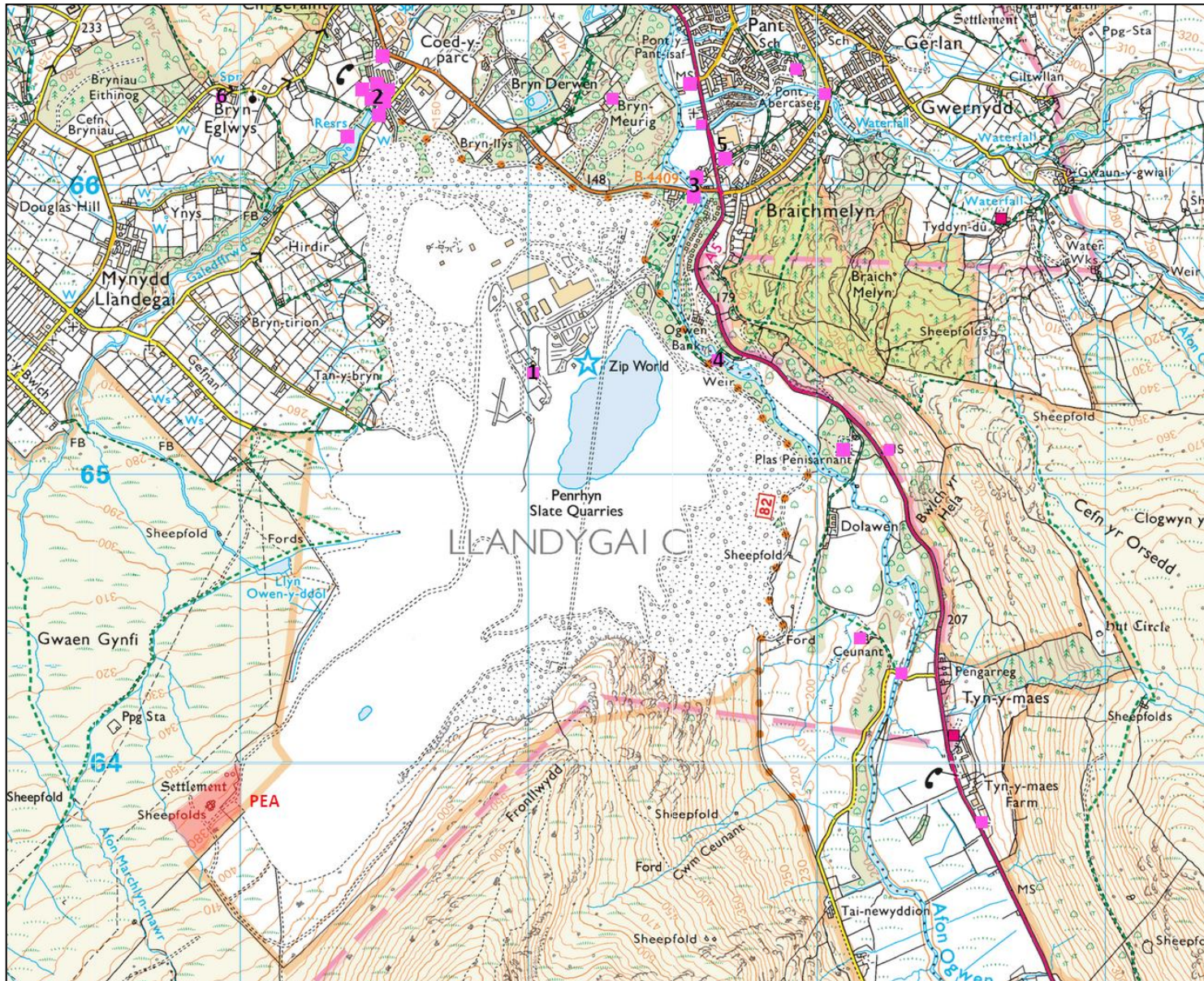


Figure 8.5 Listed Buildings within approximately 3km of the PEA © Crown copyright. All rights reserved. Licence number 100043831





Figure 8.6 Gwynedd HER Entries within and near PEA © Google base photo



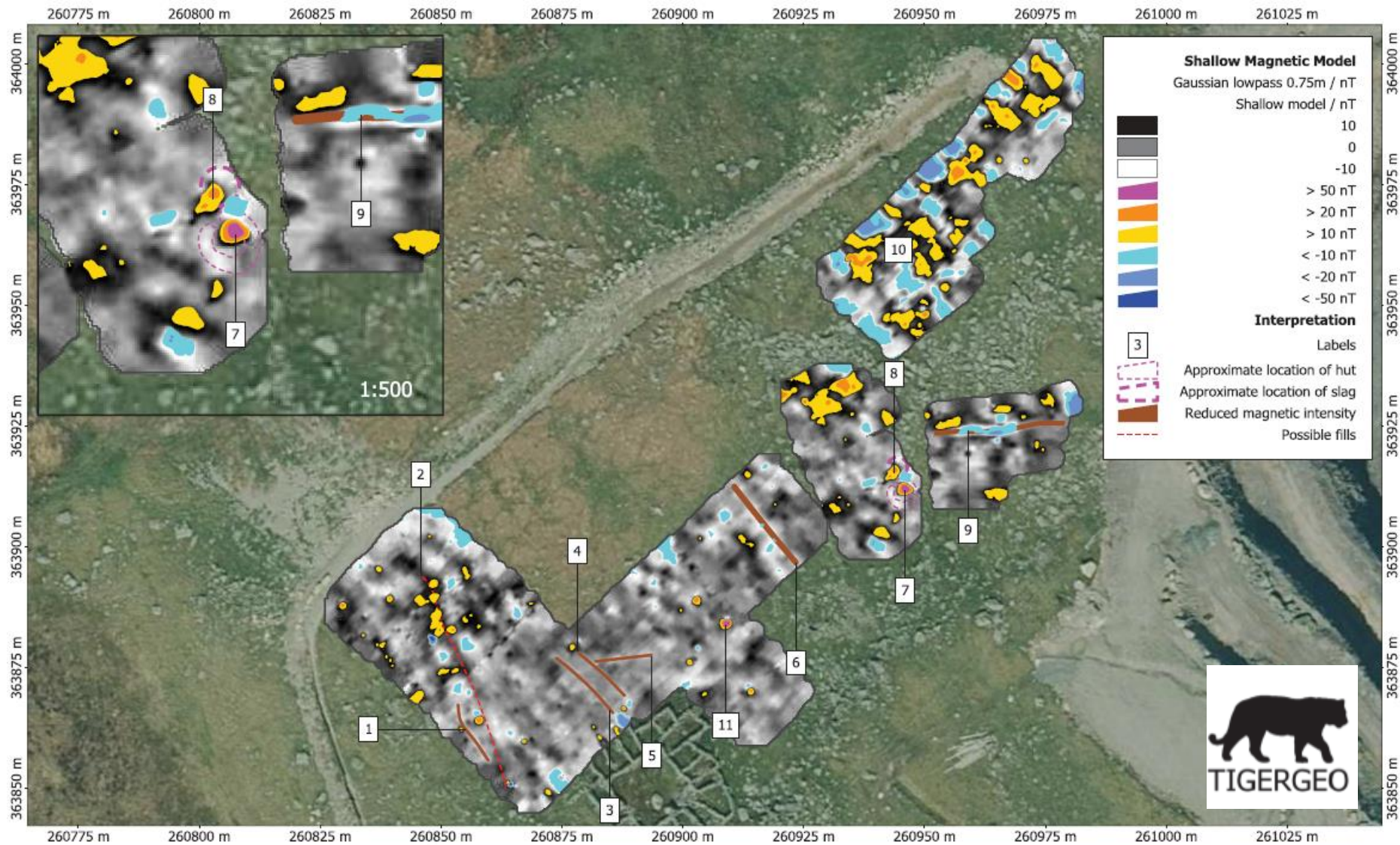


Figure 8.7 Geophysical Survey Interpretation © TigerGeo

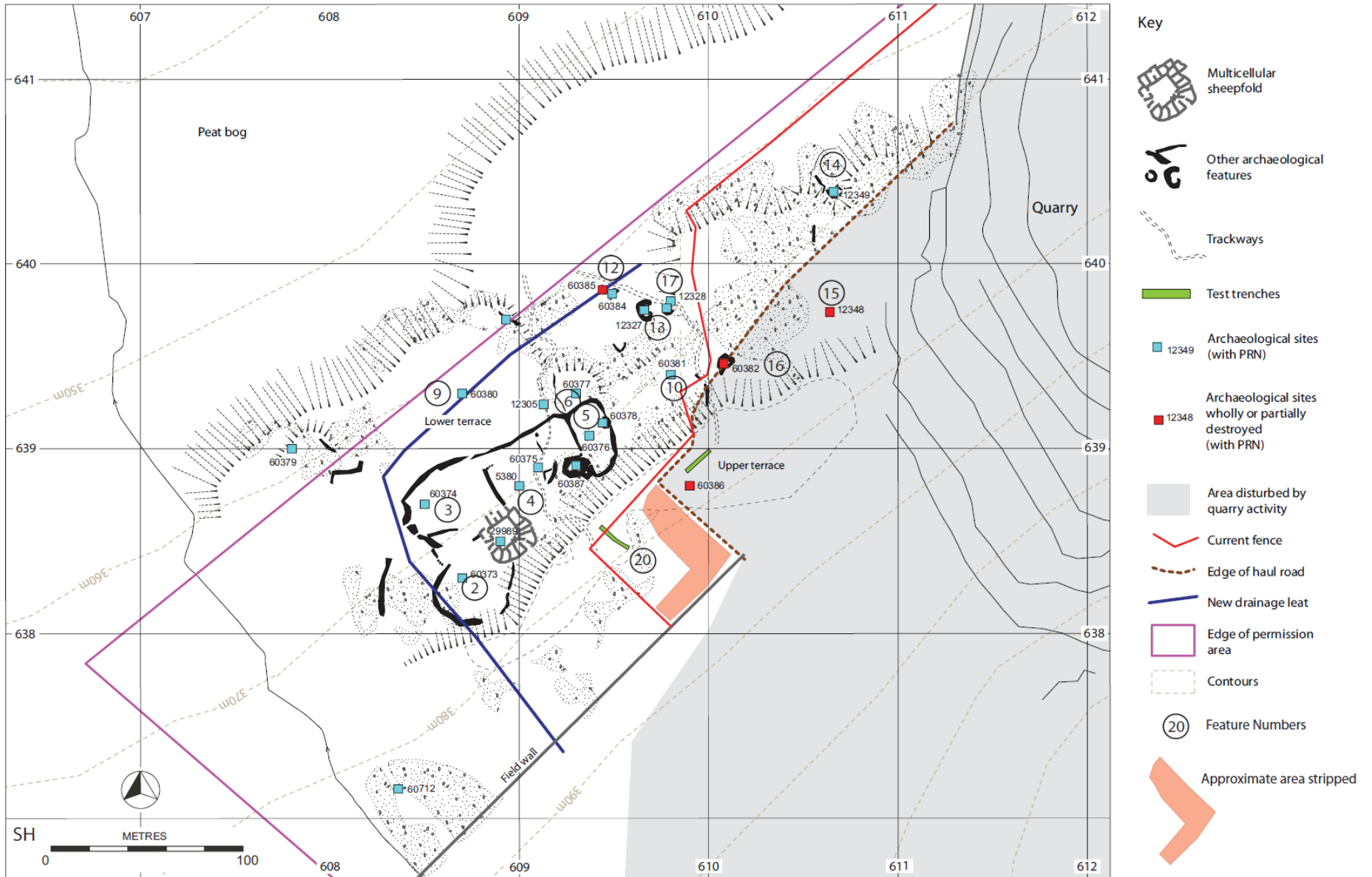


Figure 8.8 Locations of Phase 1 Archaeological Evaluation Test Pits



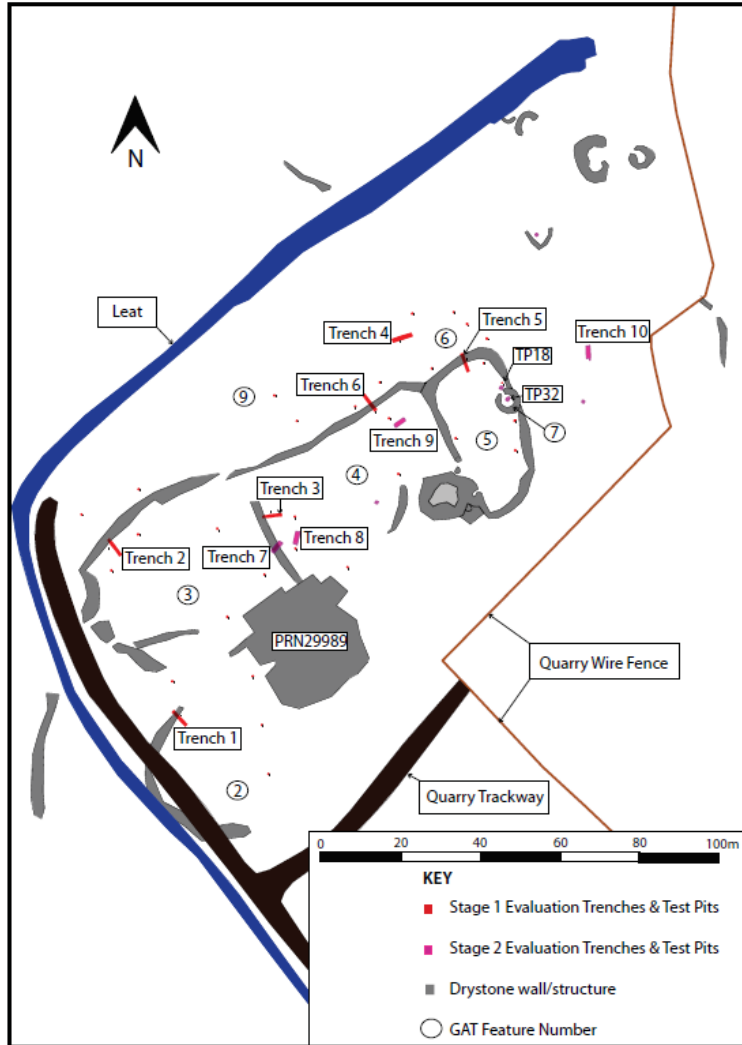


Figure 8.9 Detail of Phase 1 and 2 (post-geophysical survey) archaeological evaluation trenches and test pits





Figure 8.10 The sheepfold © GAT





Figure 8.11 CN297 Slate Gwaliau at Penrhyn Quarry



Figure 8.12 View from 100m to the east of CN297 Slate Gwaliau at Penrhyn Quarry looking towards PEA (not visible) (Google Earth 2019).



Figure 8.13 Looking towards PEA (not visible) from near CN219 Ty'n Twr



Figure 8.14 Looking towards PEA (not visible) from CN119 Sling burial chambered tomb, set in trees with no outward visibility.





Figure 8.15 View towards PEA from close to CN119 Sling burial chambered tomb (Google Earth 2019). The view is blocked by trees and topography.



